



KURTMAN

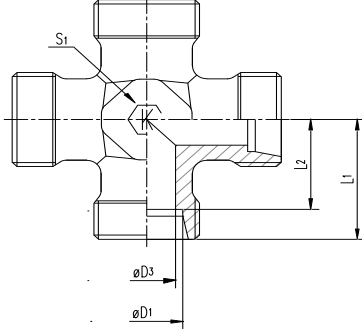
K Union cross - 24° cone end

K-KRUVA

Gövde sipariş kodu

Order code without nut and cutting ring

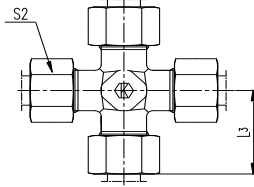
XK....(X124...)



Komple sipariş kodu

Order code with nut and cutting ring

K....(124...)



Series	Tube	D3	L1	L2	L3	S1	S2	Weight	ITEM CODE	ITEM NAME	PN (bar)
	ØD1								PARÇA KODU	PARÇA ADI	
	Boru							g/1			
	Çapı							piece			
LL DB	4	3.0	15	11.0	21	9	10	13	124100404	K4DB	100
	6	4.5	15	9.5	21	9	12	14	124100606	K6DB	100
	8	6.0	17	11.5	23	12	14	24	124100808	K8DB	100
L NB	6	4.0	19	12.0	27	12	14	35	124200606	K6NB	315
	8	6.0	21	14.0	29	12	17	40	124200808	K8NB	315
	10	8.0	22	15.0	30	14	19	52	124201010	K10NB	315
	12	10.0	24	17.0	32	17	22	69	124201212	K12NB	315
	15	12.0	28	21.0	36	19	27	130	124201515	K15NB	315
	18	15.0	31	23.5	40	24	32	188	124201818	K18NB	315
	22	19.0	35	27.5	44	27	36	251	124202222	K22NB	160
	28	24.0	38	30.5	47	36	41	392	124202828	K28NB	160
	35	30.0	45	34.5	56	41	50	618	124203535	K35NB	160
42	36.0	51	40.0	63	50	60	905	124204242	K42NB	160	
S YB	6	4.0	23	16.0	31	12	17	58	124300606	K6YB	630
	8	5.0	24	17.0	32	14	19	82	124300808	K8YB	630
	10	7.0	25	17.5	34	17	22	97	124301010	K10YB	630
	12	8.0	29	21.5	38	17	24	146	124301212	K12YB	630
	14	10.0	30	22.0	40	19	27	176	124301414	K14YB	630
	16	12.0	33	24.5	43	24	30	220	124301616	K16YB	400
	20	16.0	37	26.5	48	27	36	339	124302020	K20YB	400
	25	20.0	42	30.0	54	36	46	576	124302525	K25YB	400
	30	25.0	49	35.5	62	41	50	843	124303030	K30YB	400
38	32.0	57	41.0	72	50	60	1350	124303838	K38YB	315	

LL= very light series DB= Düşük basınç

L= light series NB= Normal basınç

S= heavy series YB= Yüksek basınç

PN (bar) = PN (MPa)

10

Çinko kaplama / Zinc plated=Cr(VI)-free