



KURTMAN

RI Thread reducer/expander

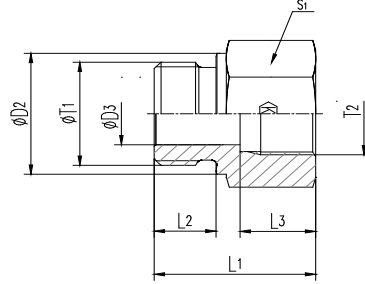
Male BSPP thread - metal sealing edge (ISO 1179) / Female BSPP thread (ISO 1179-1)

L LÜLE

Sipariş kodu

Order code

L...(243....)



T1	T2	D2	D3	L1	L2	L3	S1	Weight g/1 piece	ITEM CODE	ITEM NAME
									PARÇA KODU	PARÇA ADI
G 1/8A	G 1/4	14	4	31	8	17.0	19	40	243010204	L1/8"-1/4"
G 1/8A	G 3/8	14	4	32	8	17.0	24	60	243010206	L1/8"-3/8"
G 1/4A	G 3/8	18	5	36	12	17.0	24	64	243010406	L1/4"-3/8"
G 1/4A	G 1/2	18	5	40	12	20.0	30	116	243010408	L1/4"-1/2"
G 1/4A	G 3/4	18	5	43	12	22.0	36	174	243010412	L1/4"-3/4"
G 3/8A	G 1/2	22	8	41	12	20.0	30	126	243010608	L3/8"-1/2"
G 3/8A	G 3/4	22	8	44	12	22.0	36	185	243010612	L3/8"-3/4"
G 1/2A	G 3/4	26	12	46	14	22.0	36	145	243010812	L1/2"-3/4"
G 1/2A	G 1	26	12	49	14	24.5	41	227	243010816	L1/2"-1"
G 1/2A	G 1 1/4	26	10	53	14	26.5	55	474	243010820	L1/2"-1 1/4"
G 3/4A	G 1	32	16	51	16	24.5	41	249	243011216	L3/4"-1"
G 3/4A	G 1 1/4	32	16	55	16	26.5	55	503	243011220	L3/4"-1 1/4"
G 3/4A	G 1 1/2	32	16	57	16	28.5	60	601	243011224	L3/4"-1 1/2"
G 1A	G 1 1/4	39	20	57	18	26.5	55	510	243011620	L1"-1 1/4"
G 1A	G 1 1/2	39	20	59	18	28.5	60	608	243011624	L1"-1 1/2"
G 1 1/4A	G 1 1/2	49	25	60	20	28.5	60	660	243012024	L1 1/4"-1 1/2"

PN (bar) = PN (MPa)

10

Çinko Kaplı / Zinc plated=Cr(VI)-free